



CSIRO



Australian Government

Australian Centre for  
International Agricultural Research



## Locating 'Priority Zones' to Re-Vegetate the CSHC A Pragmatic Approach to Optimise 'the bang for the buck'

Tim McVicar / Tom Van Niel / Wen Zhongming / Li Lingtao

October 2005





## A conceptual model for the location of priority zones



Given that we now know what species are suitable for different locations in the CSHC.



The next question is “where are the best places to encourage the implementation of the re-vegetation program?” – **or where are the priority zones?**

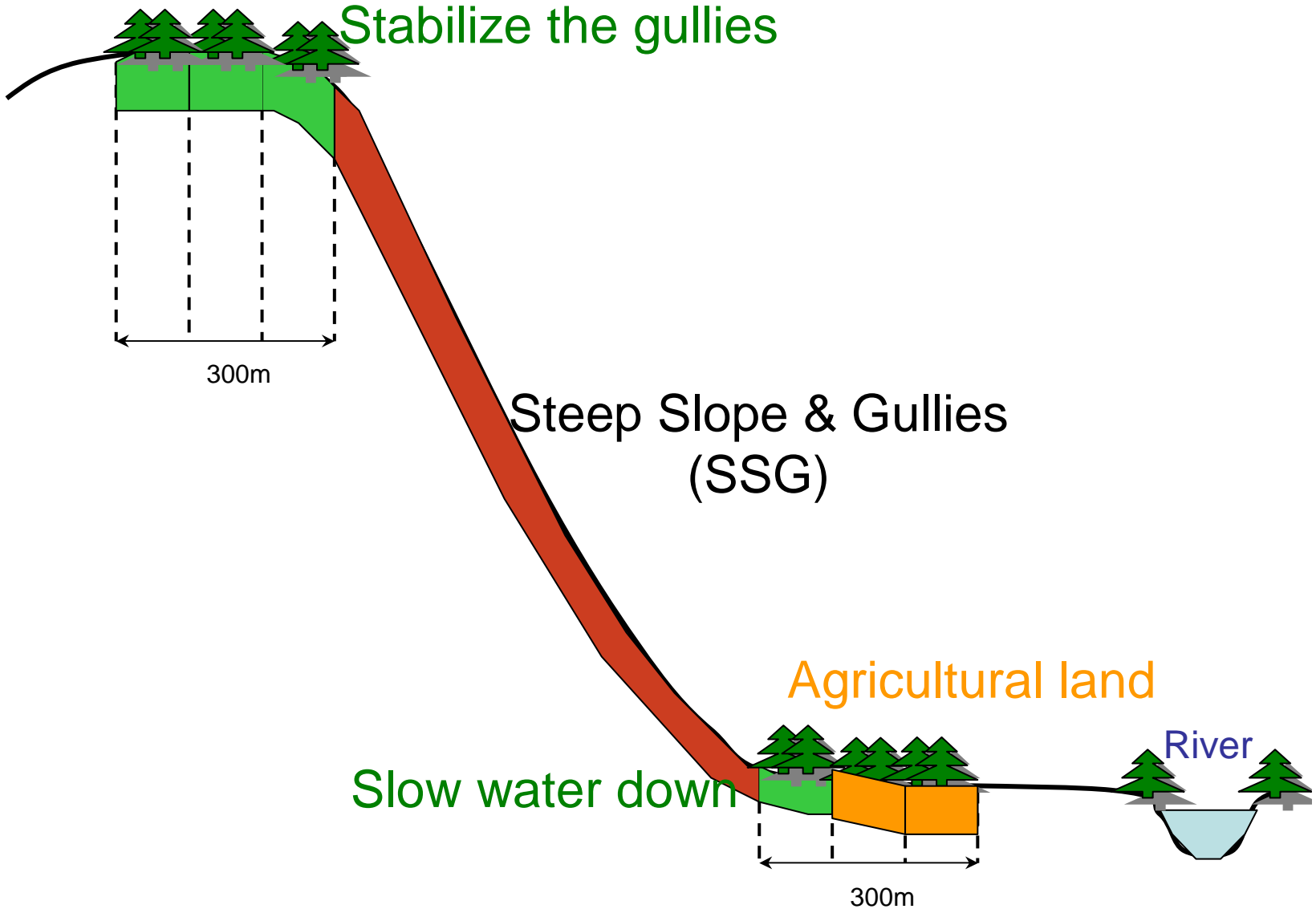


Want to minimize the reduction of the loss of water yield while maximising the reduction of soil erosion (there will be other benefits such as biodiversity and carbon credits)

Our notion is to re-vegetate the areas surrounding the steep slopes and gullies. Upslope this will help stabilize the gullies and downslope this will slow the water coming from the gullies, thereby allowing some deposition of some of the eroded soil before entering rivers



# Priority zones – profile description





# Priority zones in the landscape



Australian Government  
Australian Centre for  
International Agricultural Research

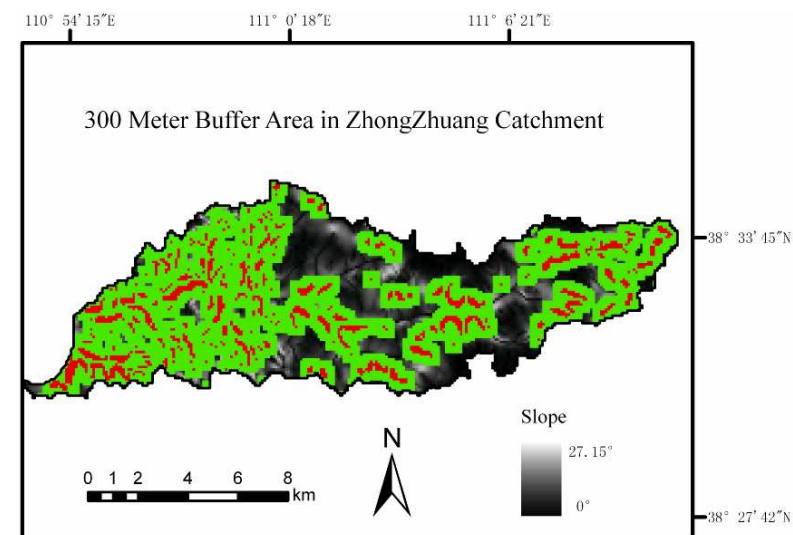
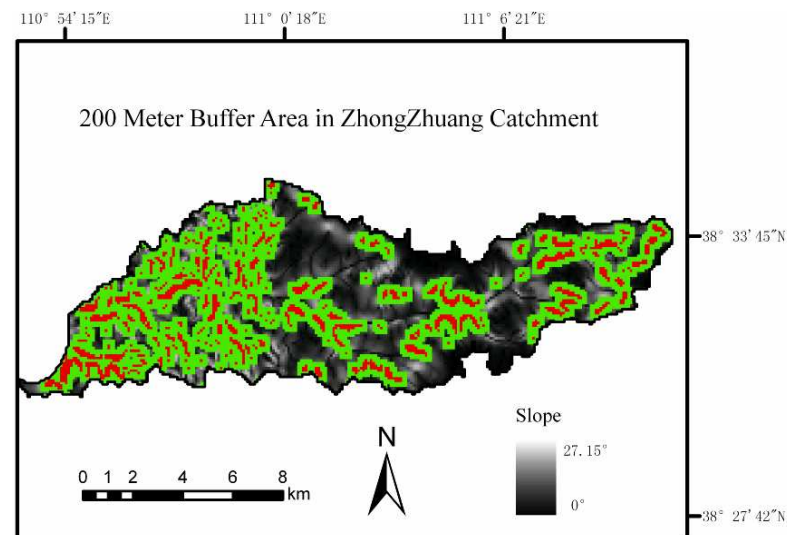
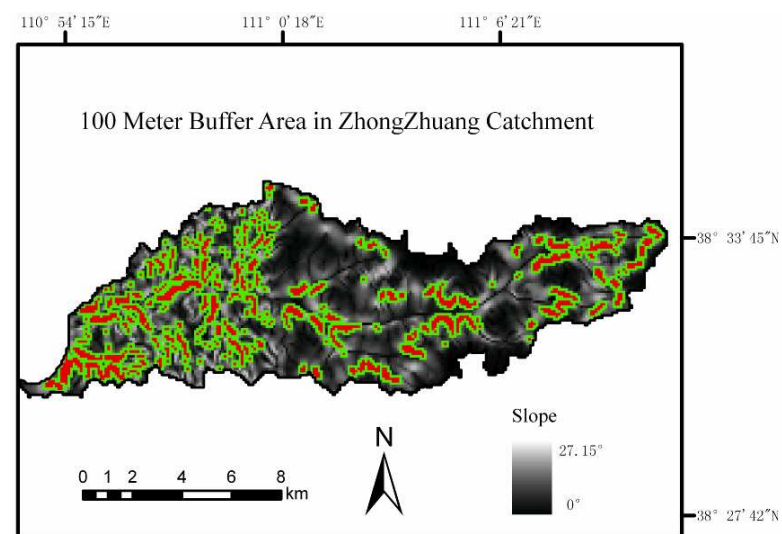
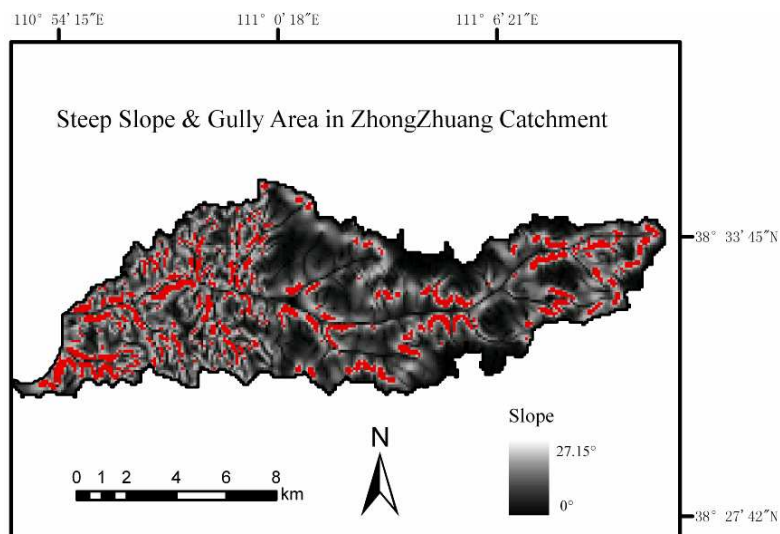




# Priority zones maps



Australian Government  
Australian Centre for  
International Agricultural Research





Priority zones maps – taking into account current land-uses (the idea of ‘land-limits’)



**Priority zones are buffers around the steep slope and gullies.**



Australian Government  
Australian Centre for  
International Agricultural Research

**If the land adjacent to the steep slope and gullies is already:**

**A) Water, Urban, or Forest (WUF); or**

**B) Water, Urban, Forest, or Agriculture (WUFA);**

**Then it can NOT be part of the re-vegetation program.**

**Have developed two ‘land limits’ for the priority zones using the WUF and WUFA categories**

**These have been calculated for each catchment / county in the tool ReVegIH**

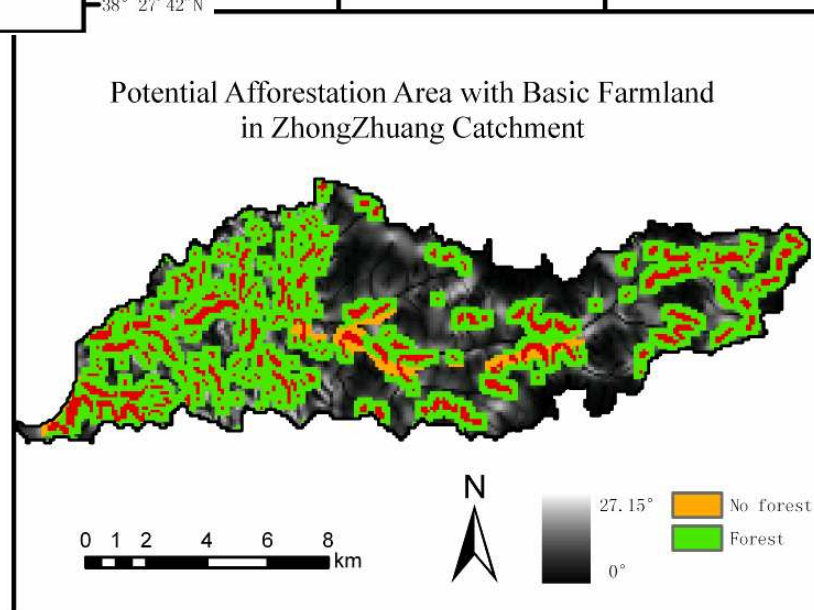
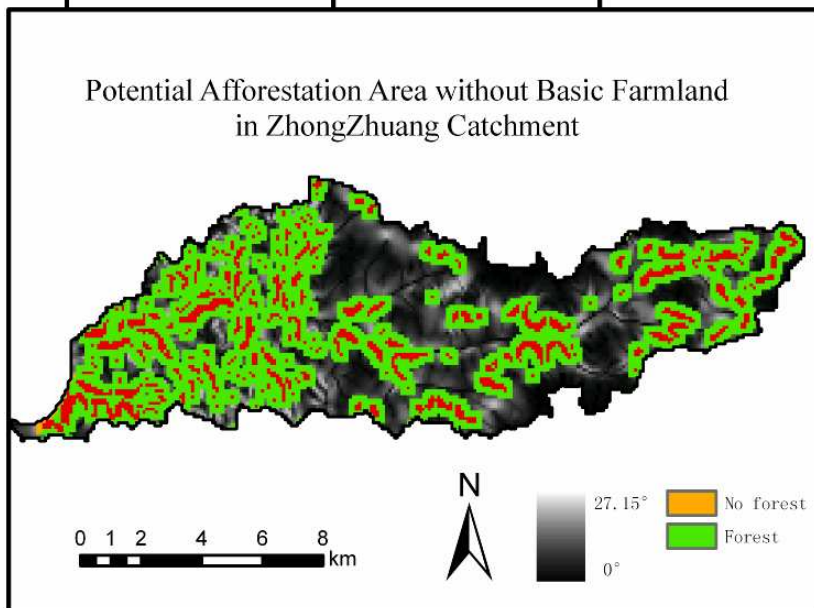




# Priority zones with land limits enforced



110° 54' 15"E      111° 0' 18"E      111° 6' 21"E

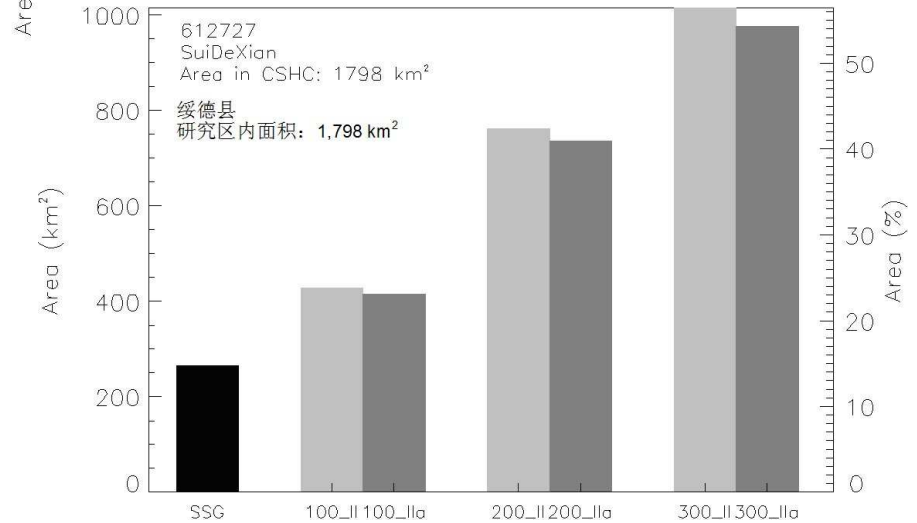
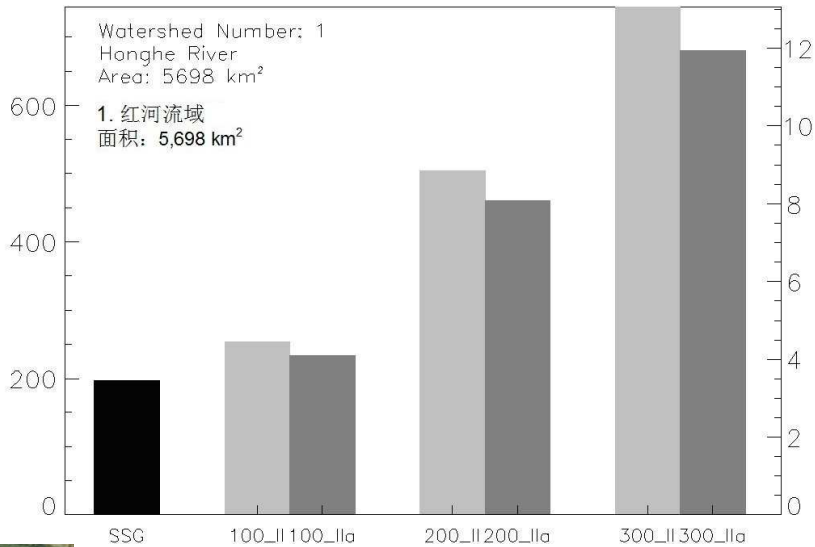




# Priority Zone – Land Limit Statistics



For each catchment and each county we have produced the areas in (km<sup>2</sup> and % area) the 100 m, 200 m, and 300 m priority zone buffers with the WUF and WUFA applied.





## Conclusions



Australian Government  
Australian Centre for  
International Agricultural Research

**Have developed a pragmatic ‘priority zone’ that can be understood and implemented by the county-level Agricultural / Forestry Leaders in the catchments and counties of the CSHC**

**The approach refines the regional vegetation suitability mapping to target specific locations for the implementation of the Chinese Central Government ‘Grain for Green’ policy**

**The approach is based on readily available data sources and has been captured in the ReVegIH tool**





Australian Government  
Australian Centre for  
International Agricultural Research

谢谢

Thank You

Dr Tim McVicar

**CSIRO Land and Water**  
Clunies Ross Street  
Canberra, ACT 2601 Australia

Phone: +61 2 6246 5741  
Email: [tim.mcvicar@csiro.au](mailto:tim.mcvicar@csiro.au)  
Web: [www.csiro.au](http://www.csiro.au)

